

# Lab *direct* qPCR

Just one step - from sample to result

Our ready-to-use qPCR solutions simplify detection of up to four different pathogen targets in a single reaction, streamlining diagnostics and saving time. Ideal for fast, accurate, and multiplex pathogen screening.



## Lab *direct* qPCR

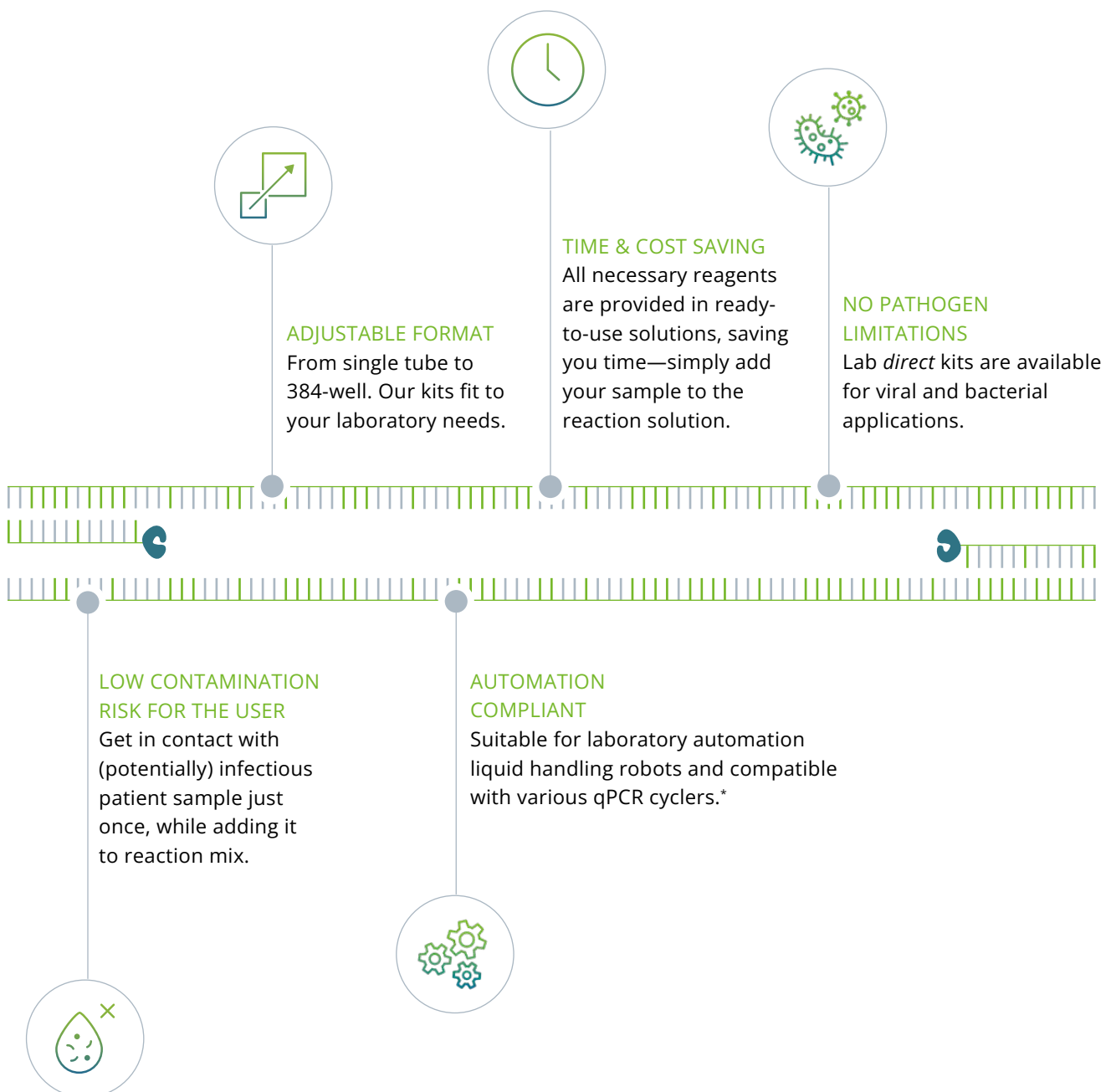
- Ready-to-use solution
- CE and CE-IVDR registered tests
- Automation compliant
- Multiplex analysis

Lab *direct* kits operational advantages

# Unmet performance

Our Lab *direct* qPCR kits enable for fast and sensitive analysis and neither require a complicated multi-step protocol for sample preparation nor for qPCR setup.

All reagents required are provided in ready-to-use solutions, simply add the sample to the reaction solution and start your run.



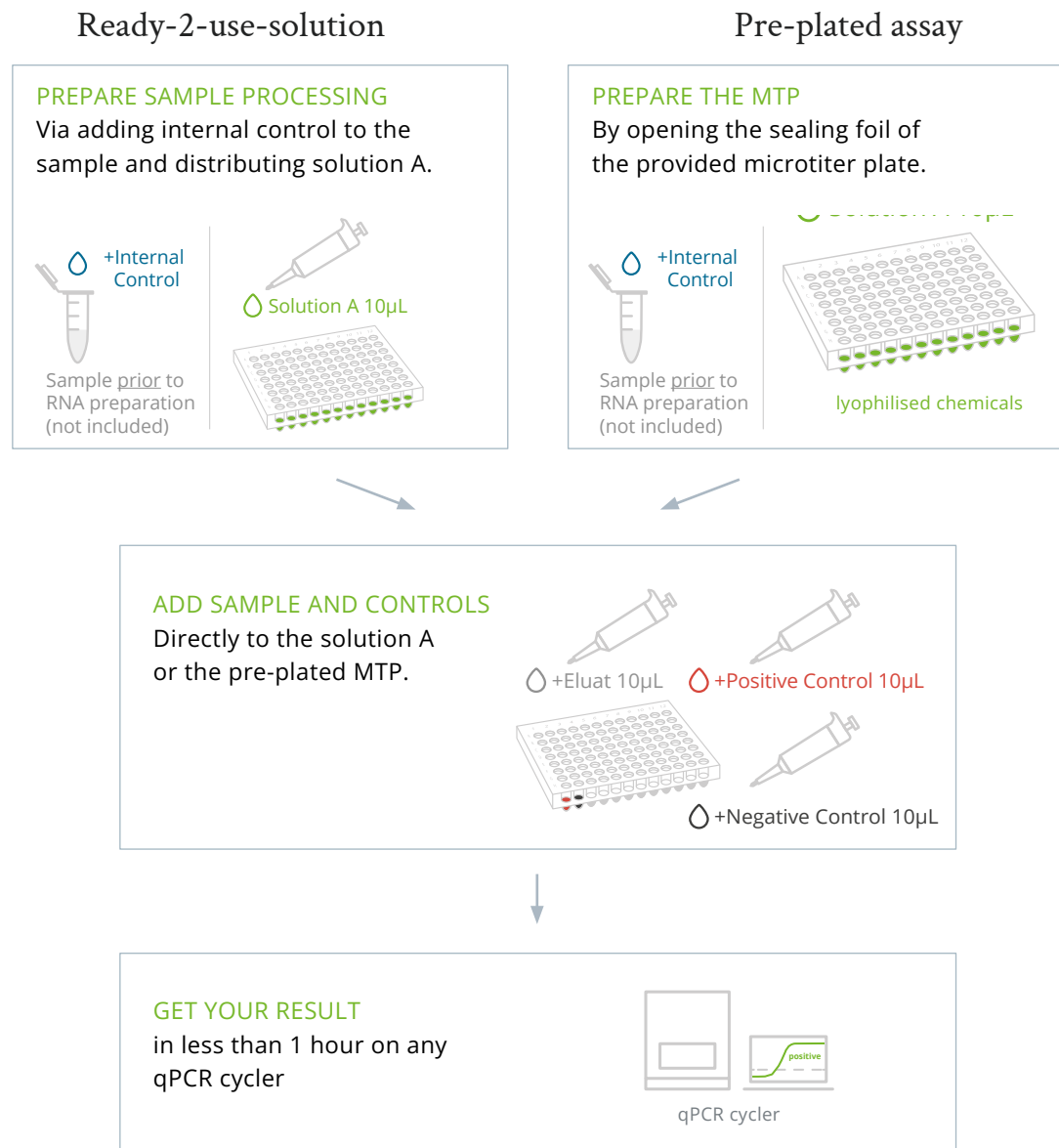
\*Lab *direct* qPCR tests are validated with the Roche LightCycler® 480 II and with the BioRad CFX Opus 96™. In general, Lab *direct* PCR tests are compatible with other qPCR cyclers (e.g., MIC Cycler, AJ qTOWER, LightCycler® 96 or 480 I )

One Kit – One Step – Two Formats

# Adapts to your needs

All our Lab *direct* qPCR kits are available as ready-2-use solutions for maximum user flexibility or as pre-plated assays for high throughput applications.

The kits contain all components needed for reverse transcription and/or qPCR detection. An additional internal control is included in each assay format to ensure intra-run performance.





Easy Diagnostic | Fast Decision | Right Treatment

CYCLE® Dx · Molecular Testing. Anytime! Anywhere!  
Lab *direct* qPCR · Just one step from sample to result.  
FRIZ Chemicals · State of the art molecules.

[www.frizbiochem.de](http://www.frizbiochem.de) · [info@frizbiochem.de](mailto:info@frizbiochem.de)

FRIZ Biochem GmbH  
Floriansbogen 2-4 · 82061 Neuried · Germany